

CALENDAR

SEPTEMBER

- Aerate and overseed fescue turf
- Continue to monitor insect, disease, and weed activity
- Deadhead annuals and perennials as needed
- Root prune Wisteria that failed to bloom to encourage blooming next year

OCTOBER

- Aerate and overseed fescue turf
- Monitor insect and disease activity
- Begin leaf removal as necessary
- Fertilize trees and shrubs
- Start fall annual (pansies, snapdragons, kale, etc) planting
- Dig and divide perennials as needed

NOVEMBER

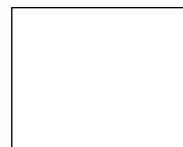
- Continue leaf removal
- Continue annual color planting
- Begin spring flowering bulb installation
- Complete overseeding of fescue turf
- Apply pre-emergence for winter weeds in turf
- Fertilize bulb plantings with bulb booster
- No pesticides on shrubs and trees unless necessary

DECEMBER

- Continue leaf removal
- Finish spring flowering bulb installation
- Overhaul equipment for upcoming season, sharpen all tools
- Prune late flowering shrubs
- Begin winter pruning
- Apply dormant oils if necessary
- Time to transplant shrubs/trees to a new location if needed



2341 Danbury Lane, Suite C
Gainesville, GA 30507



SUMMER 2008

The Latest Dirt

A Quarterly Publication from New Leaf Landscape Services

The Groundskeeper

Fall: The Best Time For Planting

The best time of the year to plant is fall, and for our customers it's prime time for taking care of business in your landscape. For example you may want to:



- Relocate trees or shrubs because they need a change of environment – more sun, less sun, etc. or to accommodate growth rate
- Redesign a portion of your landscape with newer shrubs, trees and plants
- Add new trees or shrubs to enhance areas of your yard

If you are on our Seasonal Maintenance program, our crews will be out doing the appropriate pruning and annual fall clean-up as well as applying the proper fertilizers and other treatments to your shrubs.

And speaking of chemicals, I'm sure you're aware of the increases of most products and services due to the rise in transportation costs. Unfortunately, these increases have also affected some of our costs, including chemicals. We are doing our best to hold the line on this for our clients; however over the coming months we may be adding nominal charges to reflect a portion of these increases. Thank you for your understanding.

Sincerely,

Steve Murray
President, New Leaf
Landscape Services



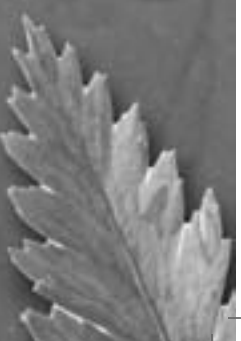
Quick Tips

It's the right time to consider laying mulch for winter protection of your trees, shrubs and gardens. The ideal materials are shredded hardwood mulch, pine straw or brown or black shredded mulch. In some cases, if your leaves are gathered up and chopped, they can be used as a base to augment the mulch to create a protective layer for your plants.

- Mulch helps protect tender plants from cold damage by holding in the heat from the earth.
- Moisture is retained with proper mulching when applied at the correct depth of 2 to 4 inches. We also take care to finely manicure beds after they're mulched, tucking in the edges, in the case of pine straw, or trenching the bed lines to reduce spillage into the grassy areas of your yard.
- Mulch also reduces weed growth and can prevent germination of winter perennial weeds in your garden.

We can install mulch now, or if you have lots of trees our crews may wait until your trees have dropped their leaves before installing mulch for the winter. And they're experienced in the right type of mulch for the application and particular situation. Please call Melanie Towe, our office manager, to schedule your mulch application.

www.newleafls.com



Employee Spotlight

Stepping Stones

678.450.6599 | www.newleafs.com



Beth Garmon, Landscape Architect

Her first trip to the Southeastern Flower Show in Atlanta at age 18 got Beth Garmon hooked on doing landscape design. "I saw all the beautiful displays of plants and flowers and said 'I can do that,'" she says. "The way all the elements

came together naturally to create such beauty intrigued me."

Beth graduated Cum Laude from the University of Georgia with her bachelor of Landscape Architecture in May 2006, but even before she graduated she began working with New Leaf Landscape Services, doing design for residential and commercial projects and putting her love of creativity into practice.

"My favorite part of my work is the chance to collaborate with clients for the right balance of creativity and functionality," Beth says. "Being a good listener is crucial, and my knowledge of horticulture, coupled with the ideas clients and I come up with, is the best of all possible worlds."

Beth says she looks at her work as an artist, using colors and textures to tell a story or create a mood. "There are so many wonderful types of plants to choose from, with new varieties being developed all the time, that the choices are constantly changing," she says. "That's part of the freshness of what I do."

Beth and her husband Eric have been married for one year and live in Gainesville. They have a black lab and a cat. In her spare time she's an avid reader and enjoys home improvement.

"Let me tell you the biggest reward in my work," she says. "When an installation is complete and the client says, 'Now, that's exactly what I wanted; it's perfect,'" I know that our collaboration has been successful."

Your landscape changes with the seasons, and here at New Leaf Landscape Services, you rely on us to keep ahead of the curve to beautify and maintain your investment.

Fall Color

Already many of our customers have contacted us about designing and installing their fall and winter annuals. Pansies are always popular, but consider the gray-green Dusty Miller and foliage/ornamental vegetables and herbs such as kale, cabbage and parsley.

Our landscape designers have developed some beautiful combinations of color and foliage plants that are sure to make your landscape the best looking in your neighborhood.

Always remember that our staff is only a telephone call away, and if you have any questions about your lawn or your landscape, please call us.

Turf and Lawn

Cool-season grasses, including our area's popular fescue, are coming into their own as the temperatures drop. Fall is the ideal time for aerating and overseeding and the 10-week window before the cold sets in has just begun. If you haven't talked with us about scheduling your aeration and seeding please call our office. Also, up to 10 weeks of watering for professionally

installed landscape elements, including overseeding or laying sod in your lawn, is allowed under the current watering guidelines.

Prevent Winter Weeds

Warm-season grasses will begin their fall/winter dormancy shortly. If you do not have New Leaf doing your turf program, now is the time to ask us about what's needed for your lawn to ensure its proper care. Our staff can handle all of your lawn- and turf-care needs.

To prevent bright patches of winter weeds in your Bermuda and Zoysia turf, such as annual bluegrass/poa anna, chickweed, henbit and others, a complete pre-emergent treatment is probably needed. Fescue turf will not require this treatment until after the first of the year

when the new seed has had plenty of time to get established from aeration and seeding.

Seasonal Pruning

Take the worry about of when to prune your trees and shrubs with New Leaf Landscape Services' new Seasonal Maintenance Program. To optimize the health, foliage and flower production of elements of your landscape, we've designed this cost-effective way to continue the care your investment deserves.

Talk to us about how our new Seasonal Maintenance Program can benefit your curb appeal all year long. Call Melanie Towe, our office manager for details.

Bulbs for Spring Color

From the early-blooming splashes of yellow and purple crocuses to the brilliant show of daffodils, consider bulbs that are reliable and multiply on their own. While many people enjoy the colorful shapes and habits of tulips, our temperatures in north Georgia do not get cold enough to encourage these bulbs to re-bloom each year.

Now is the time to begin planting bulbs, and our staff can assist with the best selections for your landscape design. Ask us about planting the showy Ice Follies and Carlton that bloom bright yellow or some of the newer pink and apricot combinations. Miniature daffodils can brighten a pathway or think about creating a full spring season show with a combination of early, mid- and late-season bloomers, planted in masses.

